

BrainChild

MKT Data Logger XH 10/XH11



General Description

The XH-Logger is a compact, portable device ideal for recording temperature and humidity. It provides temperature and humidity measurements suitable for various requirements and has multiple recording methods, data analysis capabilities, and report output functions. XHLogger supports two types of sensors: internal and external, which can be used in different locations for various monitoring applications.

XH10: Internal sensor, suitable for factory or warehouse monitoring.

XH11: External sensor, suitable for refrigerators, moisture-proof boxes, or any cabinet where users need to view values from the outside.

Specifications

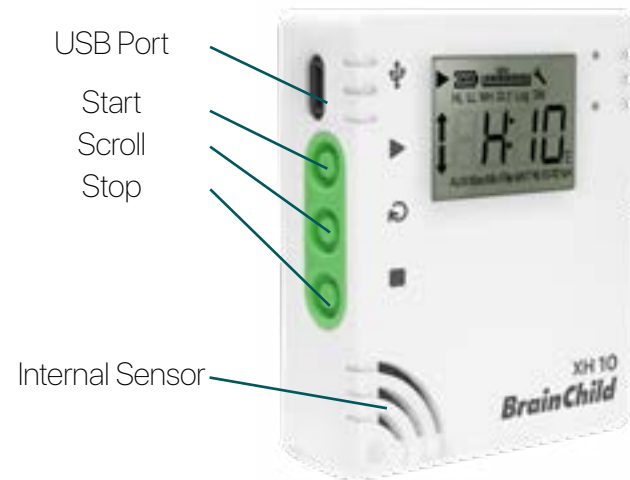


- One-Key Start/Stop or set Start/Stop at a scheduled time.
- Set parameters, download PDF reports and supply power via the USB interface.
- Temperature and humidity statistical data.
- Provide temperature measurements in Celsius (°C) and Fahrenheit (°F).
- Temperature/humidity and device status on the LCD screen.
- Temperature and humidity data tracking.
- Configurable sampling rate.
- User-friendly software, DLV (Data Logger Viewer).
- High power efficiency.
- IP65 protection.
- Display Mean Kinetic Temperature (MKT).

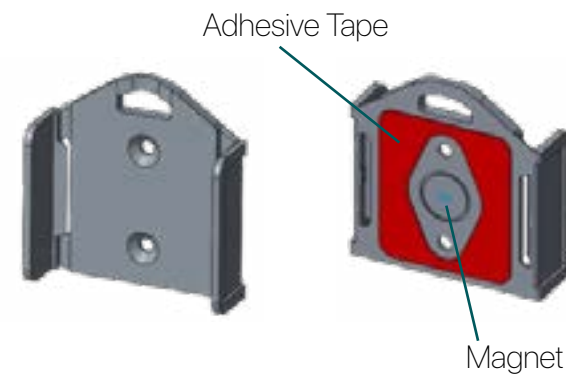
Specifications

Power Supply	USB/ER14250 Battery(1 year battery life @ 1 min. log interval)		
USB Voltage(@500mA)	Min.: 4.5 VDC	Normal: 5 VDC	Max.: 5.5 VDC
Log Interval	1 sec~24 hrs		
Temp. display resolution	0.1 °C /°F		
Operating range	Temp.: -10°C (14°F) ~ 60°C (122°F) Humidity: 10%RH~90%RH		
Accuracy	Temp.: 0°C ~ 50°C (±0.3°C), others ±0.5°C Humidity: 20%~80%@25°C(±3%RH) others ±5%RH		
Internal Memory	Maximum 100 files (record start to stop as one file), maximum 79,872 logs, maximum 200,192 logs.		
Protective Class	IP65		
Dimensions	65.1 x 70 x 23.25mm		
Weight	82.1 g (with battery, external sensor excluded)		

Outlook ▶



Mounting Plate ▶



PC Software

Data Logger Viewer (DLV) is available for download at www.brainchildtw.com. The software is easy to install and use. It is important that users configure the new XHLogger before using it.

Sensor List ▶

No.	Name	Serial No.	Brand	Model	Unit	Min	Max	Resolution	Mode	Alarm	Alarm Mode	Alarm Value	Alarm Unit	Alarm Delay	Alarm Action
1	Temp	0000000000000000	DS18B20	1	°C	-55	125	0.1	Normal	On	High	40	°C	10	Beep
2	Hum	0000000000000000	DHT22	1	%RH	0	100	0.1	Normal	On	High	90	%RH	10	Beep
3	Temp	0000000000000000	DS18B20	1	°C	-55	125	0.1	Normal	On	High	40	°C	10	Beep
4	Hum	0000000000000000	DHT22	1	%RH	0	100	0.1	Normal	On	High	90	%RH	10	Beep
5	Temp	0000000000000000	DS18B20	1	°C	-55	125	0.1	Normal	On	High	40	°C	10	Beep
6	Hum	0000000000000000	DHT22	1	%RH	0	100	0.1	Normal	On	High	90	%RH	10	Beep
7	Temp	0000000000000000	DS18B20	1	°C	-55	125	0.1	Normal	On	High	40	°C	10	Beep
8	Hum	0000000000000000	DHT22	1	%RH	0	100	0.1	Normal	On	High	90	%RH	10	Beep
9	Temp	0000000000000000	DS18B20	1	°C	-55	125	0.1	Normal	On	High	40	°C	10	Beep
10	Hum	0000000000000000	DHT22	1	%RH	0	100	0.1	Normal	On	High	90	%RH	10	Beep

List all XHLoggers connected to PC and display the status.

Memory Management ▶

The total memory of the system is 200,192 records, which can be used for up to 100 files. The size of each file is maximum 79,872 records. The memory space is shown as follows.



Configuration Home ▶



Users can set home page to display temperature, humidity, max/min temperature, or MKT.

Parameter Configuration



On Parameter page, users can configure the Name, Time Zoom, and Start/Stop mode of the XHLogger.

Tip: If multiple XHLoggers with the same configuration are required, users can use the 'Copy' and 'Paste' functions on all XHLoggers.

History Reviewing

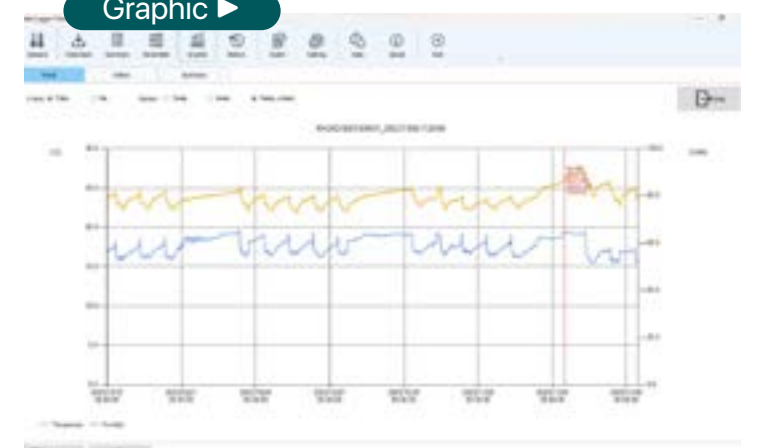
No.	Name	Serial No.	Brand	Model	Unit	Min	Max	Resolution	Mode	Alarm	Alarm Mode	Alarm Value	Alarm Unit	Alarm Delay	Alarm Action
1	Temp	0000000000000000	DS18B20	1	°C	-55	125	0.1	Normal	On	High	40	°C	10	Beep
2	Hum	0000000000000000	DHT22	1	%RH	0	100	0.1	Normal	On	High	90	%RH	10	Beep
3	Temp	0000000000000000	DS18B20	1	°C	-55	125	0.1	Normal	On	High	40	°C	10	Beep
4	Hum	0000000000000000	DHT22	1	%RH	0	100	0.1	Normal	On	High	90	%RH	10	Beep
5	Temp	0000000000000000	DS18B20	1	°C	-55	125	0.1	Normal	On	High	40	°C	10	Beep
6	Hum	0000000000000000	DHT22	1	%RH	0	100	0.1	Normal	On	High	90	%RH	10	Beep
7	Temp	0000000000000000	DS18B20	1	°C	-55	125	0.1	Normal	On	High	40	°C	10	Beep
8	Hum	0000000000000000	DHT22	1	%RH	0	100	0.1	Normal	On	High	90	%RH	10	Beep
9	Temp	0000000000000000	DS18B20	1	°C	-55	125	0.1	Normal	On	High	40	°C	10	Beep
10	Hum	0000000000000000	DHT22	1	%RH	0	100	0.1	Normal	On	High	90	%RH	10	Beep

Download the records to your PC and review the data.

Tip: You can press 'Ctrl' and select multiple sets of historical data, then analyze these data in the same report.

Graphic ▶

Users can use the recorded data to generate graphics to compare with data from other XHLoggers.



Application

The XH10 and XH11 are perfect solutions for recording and monitoring temperature and humidity in warehouses, vaccine refrigerators, cold chain management, temperature mapping, greenhouse planting, museums, and art galleries.

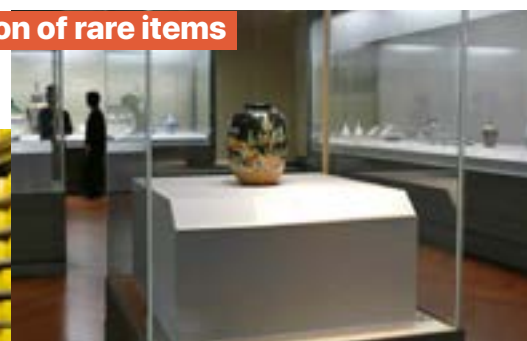
Temperature Mapping



Cultivation of crops with high economic value



Collection of rare items



Storage of temperature sensitive materials

