

Wi-Fi DATA LOGGER XH12

Temperature and Humidity Data
Tracking



BrainChild

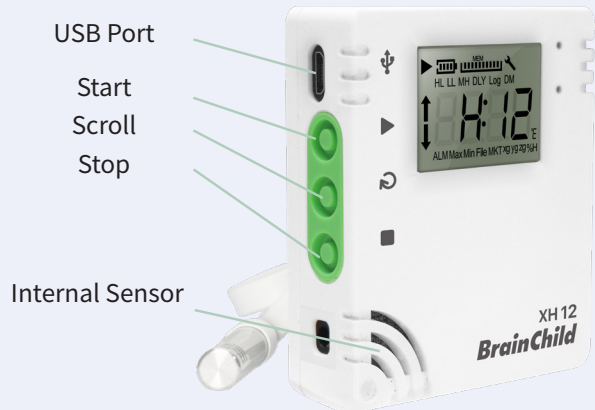
Wi-Fi Real-Time Monitoring XH12

The Best Tool for Warehouse Monitoring

Engineered to meet your wireless data collection needs, the XH12 Wi-Fi Temperature and Humidity Data Logger stands as the pinnacle of reliability and performance. Seamlessly recording temperature and humidity data, the XH12 transmits this data to PC software via a robust Wi-Fi connection. Our DLV (DataLogger Viewer) software boasts powerful data analysis and report generation features, coupled with an intuitive interface that provides real-time displays of temperature, humidity, and alarm statuses for all connected XH12 devices. This enables managers to effortlessly monitor facility conditions, streamlining management and enhancing efficiency.

Equipped with an external sensor, the XH12 offers flexibility by allowing the sensor to be placed inside the monitored container while the main unit remains outside. This design ensures a stable Wi-Fi connection, making it suitable for a myriad of monitoring applications. Stay informed of temperature and humidity changes anytime, anywhere with the XH12.

Make the smart choice for your facility's monitoring needs with the XH12 Wi-Fi Temperature and Humidity Data Logger—where precision meets innovation.



Interface

- ✓ Wi-Fi Data Logger
- ✓ LCD Always On Display and LED Indicator
- ✓ Extrenal Sensor
- ✓ Smart Power Saving Mode
- ✓ Automatic recovery after signal interruption
- ✓ USB interface provides report downloads and power supply.
- ✓ Provides temperature units in Celsius (°C) and Fahrenheit (°F)
- ✓ Mean Kinetic Temperature (MKT) display
- ✓ User-friendly monitoring software: Data Logger Viewer (DLV)
- ✓ Remote configuration available via DLV
- ✓ Adjustable sampling rate



Mounting Plate



Specifications

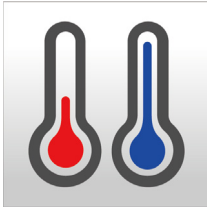
Log Interval	1min~24Hrs	Time Accuracy	Sync with computer
Sensors	External Temperature and Humidity Sensor		
Temperature Range	-10°C ~60°C (14 °F ~122 °F)	Humidity Range	10%RH~90%RH
Temperature Accuracy	0°C ~50°C : ±0.3°C ; Others: ±0.5°C		
Humidity Accuracy	20%~80%@25°C : ±3%RH; Others: ±5%RH		
Display Resolution	0.1 °C / 0.1 °F / 0.1%	LCD Operating Range	-20°C ~60°C
Sensor Response Time	Temperature >2 seconds; Humidity 8 seconds		
Alarm Configuration	High Hight, High, Low, Low Low	Preprogram Option	User Programmable
Start Option	Botton; Immediate; At Time	Stop Option	Botton; At Time
Auto Restart	No	Security	Password Protected
Start Delay	Yes; 1minute~ 23hrs and 59 minutes		
Memory	"Maximum can be divided to 100 files (press start and stop as one file), one file can contain a maximum of 79,872 logs, it can keep 200,192 logs in total."		
Size	65.1*70*23.25mm	Weight	130g (Battery included)
Case Material	PC540 PC+ABS	IP Rating	IP63
Warranty	12 months	IPComm. Protocol	Wi-Fi 2.4G / HTTP / TCP/ UDP Broadcast
Calibration	Calibration is done by the factory, User can find the Offset function in the DLV software		
Battery charging	Power Supply DC5V/ 1A (≥1A). From 0 to 100% around 4 hours		
Software	Data Logger Viewer works with Windows 10 and above		
Accuracy Certificate	Optional, Addional cost migh be needed.		
Other Certification	CE, RoHS, FCC		
Power Supply	USB or1500mA 3.7V Li-ion Rechargeable Battery		
Battery Life	3 Months @10 min. log interval	Temp . During Charging	10°C ~45°C
Software	Data Logger Viewer works with Windows 7 Service Pack 1 and above		
Comm. Protocol	Wi-Fi 2.4G / HTTP /TCP/ UDP Broadcast		
Default File Format	PDF	Data Export	PDF, Excel

6 Steps to Complete PC Pairing



The paired computer first completes the Wi-Fi connection setup. The Wi-Fi network can be an internal network structure (without requiring internet functionality).

Step 01



Install and launch the DLV software

Step 02



Find the "Add" button at the bottom of the software window.

Step 03



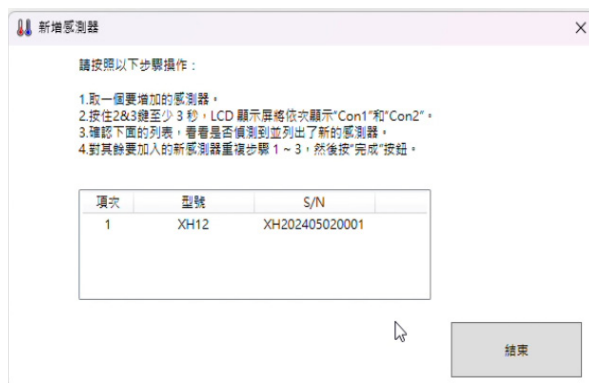
Enter the Wi-Fi ID and password.

Step 04



Press and hold the second and third buttons on the upper side of the XH12 until the screen displays "rEG".

Step 05



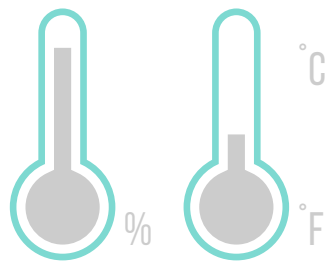
DLV will automatically search for available devices for pairing and display them in the list. Once the device name appears in the list, press the "Finish" button to complete the pairing.

Step 06

項次	型號	序號	裝置名稱	訊號	電池電量	記憶體	檔案	溫度	濕度	設備狀態	連線狀態
1	XH12	XH202401251206	PD-03	88%	98%	198325	4	25.7°C	57.6%RH	正常	連線(WiFi)

Return to the DLV home. Once the newly added device appears, the pairing process is complete. You can proceed with configuring the XH12 settings (please refer to the manual).

PC Software

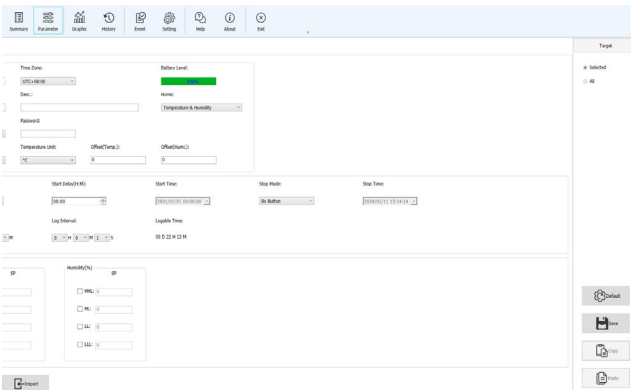


You can download Data Logger Viewer (DLV) from www.brainchildtw.com. The software is easy to install and user-friendly. Before using the new XHLogger, users need to perform basic setup to ensure proper operation. With DLV, you can download and analyze temperature and humidity data, as well as consolidate multiple datasets into a single report for comprehensive analysis.

If multiple XHLogger devices are connected simultaneously, you can use the DLV software to view the temperature, humidity values, and alarm status of all XHLogger devices.

List of Sensors

No.	Model	Serial No.	Device Name	Signal	Battery Level	Memory	File	Temperature	Humidity	Device status	Connection status
1	XH10	XH202309130006	X10-W2-02	-%	-%	--	--	-1°C	-100%	--	Disconnected
2	XH10	XH202309130005	X10-772-01	-%	-%	--	--	-1°C	-100%	--	Disconnected
3	XH10	XH202309130008	X10-W1-01	-%	-%	--	--	-1°C	-100%	--	Disconnected
4	XH10	XH202309130007	X10-W1-04	-%	-%	--	--	-1°C	-100%	--	Disconnected
5	XH10	XH202310060061	XH10-M2-03	-%	-%	--	--	-1°C	-100%	--	Disconnected
6	XH10	XH202310060042	XH10-M1-01	-%	-%	--	--	-1°C	-100%	--	Disconnected
7	XH10	XH202310060069	XH10-M1-02	-%	-%	--	--	-1°C	-100%	--	Disconnected
8	XH10	XH202310060062	XH10-SE-01	-%	-%	--	--	-1°C	-100%	--	Disconnected
9	XH10	XH202310060026	XH10-SE-02	-%	-%	--	--	-1°C	-100%	--	Disconnected
10	XH10	XH202310060048	XH10-M2-01	-%	-%	--	--	-1°C	-100%	--	Disconnected



On the Parameters page, you can configure settings for the XHLogger, such as the device name, high/low alarm values, and recording interval.

When configuring multiple XHLoggers, you can connect all devices to the computer simultaneously for setup.

Highly Configurable for Various Application

After connecting the XHLogger wirelessly to the computer, you can download the recorded data at any time.

The downloaded data will appear in the “History” section, where you can click on a single entry to view it or hold the “Ctrl” key to select multiple entries for comparison.

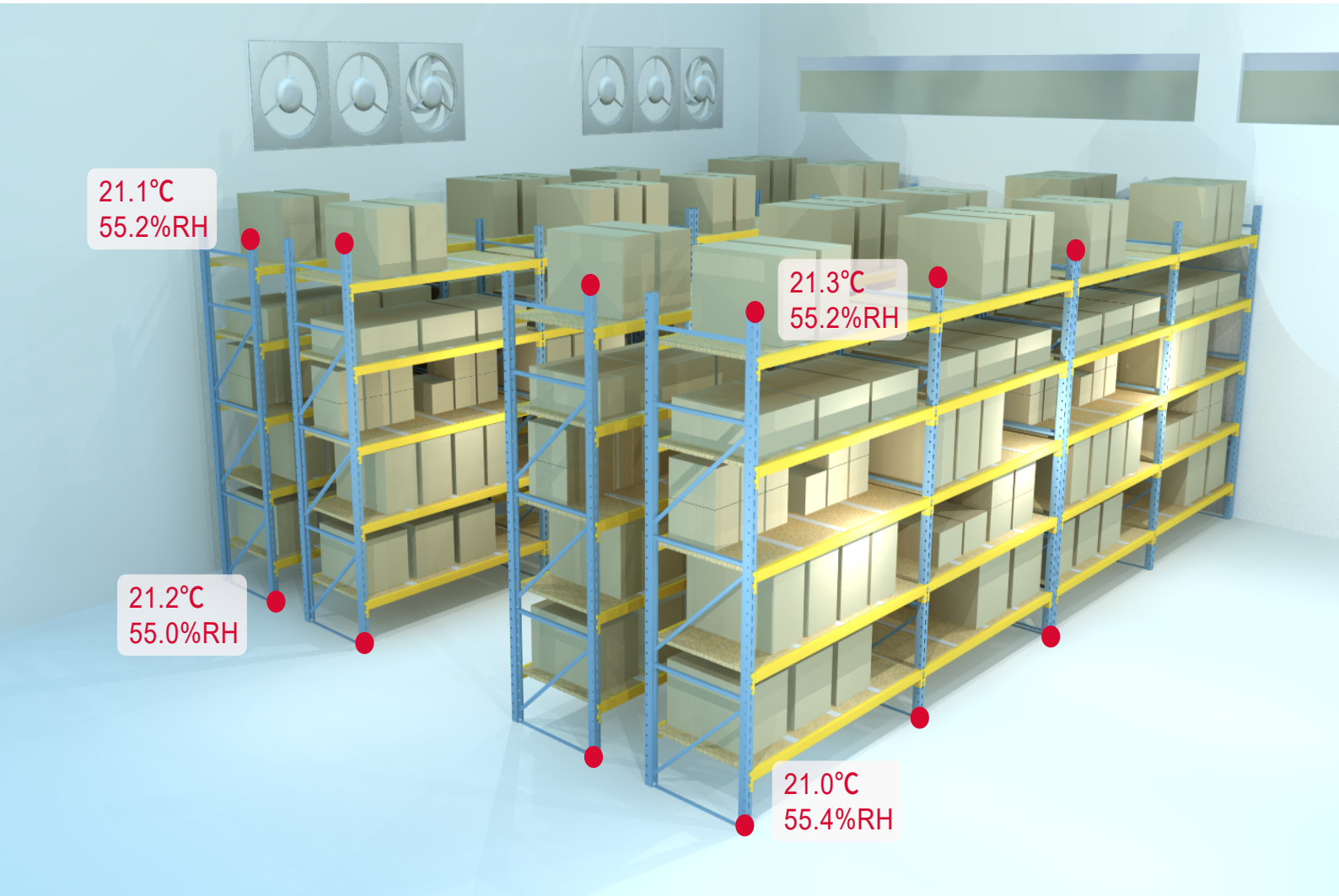
Data Storage to PC

Data ID	Start Time	Device Name	Total Memory	Current Readings	Max. Temp.	Min. Temp.	Max. Hum.	Min. Hum.	Status
XH202309130007_202310181208	2023/10/18 00:00:00	X10-W1-04	79872	1031	27.2°C	21.8°C	65.6%	51.4%	Alarm
XH202309130008_202310181262	2023/10/18 00:00:00	X10-W1-01	79872	1035	27.3°C	21.3°C	66.8%	52.0%	Alarm
XH202309130005_202310181405	2023/10/18 00:00:00	X10-772-01	79872	1035	27.9°C	22.0°C	66.1%	51.0%	Alarm
XH202309130006_202310181235	2023/10/18 00:00:00	X10-W2-02	79872	1035	28.1°C	22.9°C	66.7%	47.0%	Alarm
XH202309130007_202310181446	2023/10/18 00:00:00	Kobe	79872	79872	17.8°C	5.3°C	89.1%	35.4%	Normal
XH202309130008_202310181446	2023/10/18 00:00:00	Sensor1	79872	3727	30.3°C	24.0°C	90.4%	68.7%	Alarm
XH202309130005_202310181447	2023/10/18 00:00:00	Sensor1	79872	58	25.9°C	25.5°C	72.4%	71.3%	Alarm
XH202309130006_202310181448	2023/10/18 00:00:00	Sensor1	79872	1546	28.6°C	24.3°C	82.4%	68.8%	Alarm
XH202309130007_202310181449	2023/10/18 00:00:00	Sensor1	79872	8888	29.1°C	23.8°C	96.9%	65.1%	Alarm
XH202309130008_202310181450	2023/10/18 00:00:00	Sensor1	79872	1546	29.0°C	24.1°C	82.1%	67.0%	Alarm
XH202309130005_202310181451	2023/10/18 00:00:00	Sensor1	79872	159	27.1°C	24.3°C	81.5%	72.0%	Normal
XH202309130006_202310181452	2023/10/18 00:00:00	Sensor1	79872	159	29.3°C	24.1°C	84.6%	65.0%	Alarm
XH202309130007_202310181453	2023/10/18 00:00:00	Sensor1	79872	2439	25.6°C	22.7°C	90.0%	70.0%	Normal
XH202309130008_202310181454	2023/10/18 00:00:00	Sensor1	79872	38	24.9°C	24.8°C	72.0%	72.0%	Normal
XH202309130005_202310181455	2023/10/18 00:00:00	Sensor1	79872	323	24.9°C	24.3°C	73.0%	70.0%	Normal
XH202309130006_202310181456	2023/10/18 00:00:00	Sensor1	79872	140	25.1°C	24.3°C	75.0%	70.0%	Normal
XH202309130007_202310181457	2023/10/18 00:00:00	Sensor1	79872	73	26.3°C	27.9°C	70.0%	62.0%	Alarm
XH202309130008_202310181458	2023/10/18 00:00:00	Sensor1	79872	79	26.9°C	26.7°C	77.4%	67.0%	Alarm
XH202309130005_202310181459	2023/10/18 00:00:00	Sensor1	79872	22	27.0°C	26.9°C	66.0%	66.0%	Normal
XH202309130006_202310181460	2023/10/18 00:00:00	Sensor1	79872	104	26.2°C	26.8°C	82.0%	62.0%	Alarm
XH2023101815015_2023091615222	2023/09/16 15:47:38	sensor15	79872	1	26.1°C	26.1°C	53.9%	53.9%	Normal
XH2023101815015_2023091615223	2023/09/16 15:46:35	sensor15	79872	1	26.7°C	26.7°C	53.0%	53.0%	Normal



After selecting the historical data you want to view, DLV will convert the recorded data into a line chart, allowing you to intuitively analyze temperature and humidity trends.

Temperature and Humidity Trend Chart



21.1°C
55.2%RH

21.2°C
55.0%RH

21.3°C
55.2%RH

21.0°C
55.4%RH

Applications



High-value crop cultivation monitoring



Storage Monitoring for Temperature-Sensitive Products



Temperature and Humidity Monitoring for Museum/Exhibition Artifacts



Office A/C Monitoring



Warehouse Temperature Mapping



Storage Real-time Monitoring

BrainChild

Brainchild Electronic Co., Ltd

No.209, Chongyang Rd., Nangang District, Taipei, 115,Taiwan

TEL : +886-2-27861299 / FAX : +886-2-27861395

Sales E-mail : sales@brainchild.com.tw

Technical Support E-mail : service@brainchild.com.tw

Website : www.brainchildtw.com